

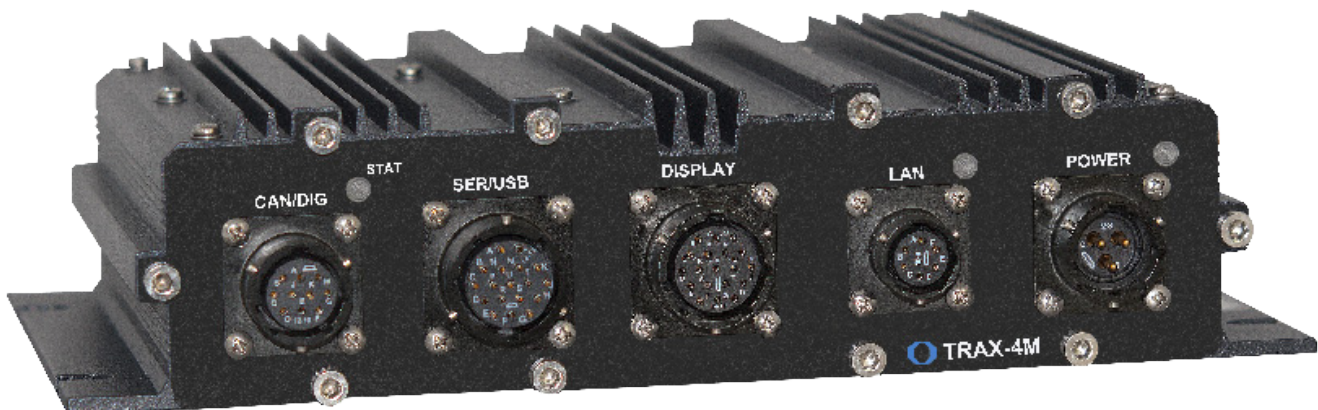
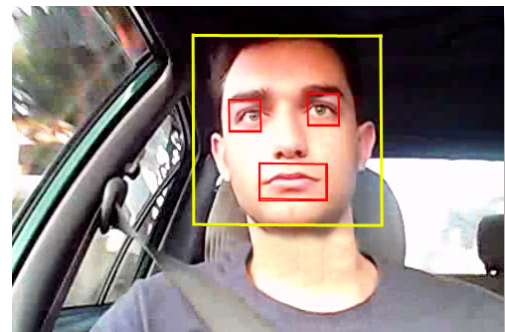
## High Performance - Compact Size

The TRAX-4M mobile platform is designed with an Intel® Quad-core for high system performance and quality graphics capability. The rugged military connectors enhance reliability where cable stress would damage PC style connectors. Backwards compatible with our popular MOBL-D2 rugged computer.

It's future-proof open framework makes it easy to add and upgrade future third party applications and functionality. One computer platform simplifies installation and maintenance; increases efficiency and safety and reduces "technology clutter".

The TRAX-4M platform supports critical safety, equipment diagnostics, driver fatigue, communication, fleet management and other mobile computer solutions

- Space conscious - fits nearly anywhere
- Open Architecture - run multiple programs simultaneously
- Intel Quad core CPU with native virtualization support
- High video performance - DirectX, Open GL, Open CL
- Wireless - GPS, WiFi, Cellular
- Linux and Windows compatible
- Made in the USA



# SPECIFICATIONS

## Processor

- Intel Quad-Core Atom CPU, 1.91 GHz
  - 2MB L2 Cache
  - 64-bit Capable
  - Virtualization Support
  - ACPI 5.0 Support

## Memory

- 4 GB DDR3-1333

## Graphics

- DirectX 11, OpenGL 3.0, OpenCL 1.2
- 542 MHz Graphics Core, 792 MHz burst with four execution units
- Hardware accelerated media encode and Decode
- VGA up to 2560 x 1600 (WQXGA) resolution  
Compatible with K-10, Motium displays

## Storage

- Integrated 32GB Solid State Disk with ECC
  - Power interrupt data protection
  - Security erase
- Support for larger capacities

## GPS

- 72 Channel engine (included)
- Concurrent, Multi-GNSS
  - GPS, GLONASS, Galileo, QZSS, SBAS
- Fast Acquisition and High Accuracy

## External I/O

- Three USB 2.0 Ports
- Two RS-232 COM Ports
- Ethernet Port
  - One 10/100 Base-T port
- Audio
  - Line out
- Digital I/O
  - Four inputs and one output with full operating voltage range
- VGA with resolution to 2560 x 1600
- TNC connector for GPS
- 2x "N" connectors for wireless options
- Status LEDs

## CAN BUS option

- PEAK compliant (option)

## Wireless Options

- 802.11b/g/n Long Range WiFi
- GSM/GPRS/LTE Cellular support

## Operating System Compatibility

- Windows Embedded Standard 7
- Windows Embedded Standard P-10
- Linux Ubuntu

## Power Supply

- 9-36 VDC input voltage (10-36 VDC continuous)
- Protection for Load Dump, Reverse Voltage, Brown Out, and Transients

## Mechanical

- Size: 157 D x 237 W x 56 H mm  
(6.2" x 9.3" x 2.2")
- Weight: 3.5 kg (7.7 lbs)

## Environmental

- Operational Temperature: -40°C to 71°C per MIL-STD 810G, Method 501.5 and 502.5
- Non-Operational Temperature: -40°C to 80°C per MIL-STD 810G, Method 503.5
- Humidity: 5-95% Non-condensing
- IP65 Dust/Moisture Rating
- Vibration: MIL-STD 810F, Method 514.5C-3
- Shock: MIL-STD 810F, Method 516.5, 20g/11ms
- Fan-less Operation

## Regulatory/EMC

- FCC Class A
- CE Mark
- RoHS Compliant

## Applications

- Public Transit Systems
- Construction Vehicles
- Military
- Remote Monitoring & Control
- Mining
- Trucking
- Oil & Gas

# ORDERING INFORMATION

- #9909R - TRAX-4M with 1.91 GHz, 4 GB DRAM, 32 GB SSD
- #9339907 - Windows Embedded Standard 7
- #9337550 - Windows Embedded Standard P-10
- #9337500 - Linux Ubuntu

**Call Octagon Sales for help  
in optimizing a solution  
+1 303.430.1500**