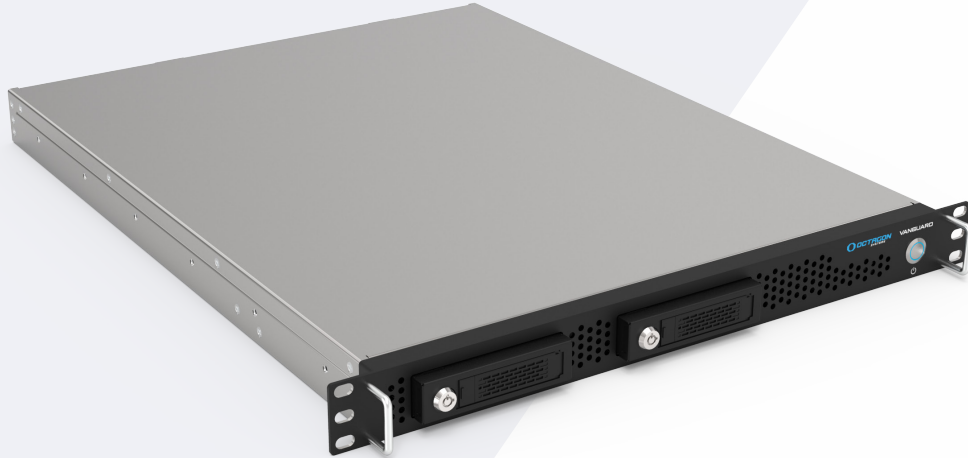
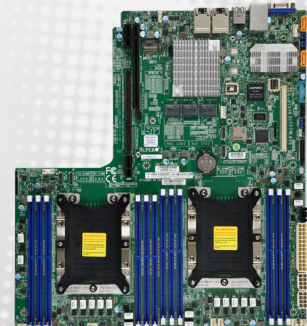


VANGUARD 1U



PRODUCT HIGHLIGHTS

- Ⓢ Latest generation scalable Intel® Xeon® processing options
- Ⓢ Fully featured, dual socketed system board
- Ⓢ Hot-swappable, front panel accessible storage bays for up to eight (8) 2.5" drives
- Ⓢ High performance R/W optimization with data security (quick erase / security erase / destroy / write protect) SSD/SAS options
- Ⓢ Hot-swap, dual-redundant, wide-range AC input power supply
- Ⓢ Six (6) removable, high reliability, high velocity fans
- Ⓢ 19" rackmount with custom rugged slider options
- Ⓢ MIL-STD-810, MIL-STD-167, MIL-STD-461 qualifications
- Ⓢ Made in Canada & USA



FEATURES

OPERATING SYSTEM	Windows 10 Pro, Windows 10 Enterprise LTSB, Windows Server 2016 or Linux	NIC	Optional: Broadcom BCM957504-P425G quad-port 25GbE SFP28 ethernet
PROCESSOR	Latest gen scalable Intel®Xeon®processors including single/dual CPU configurations, with up to 28 cores per CPU @ 2.2GHz	SFP	Optional: SFP28 25GbE LC transceiver E25GSFP28SRX
MEMORY	Up to 4TB of DDR4-3200 RAM with ECC in 16 REG DIMM slots	BIOS AND SOFTWARE	AMI UEFI, Intel®Node Manager, IPMI v1.5/2.0, KVM support, dedicated LAN, NMI, SPM, SSM, SUM, SuperDoctor®5, Watchdog
CHIPSET	Intel® C622 Chipset	TRUSTED PLATFORM MODULE	TPM 2.0 with support for Intel®vPro Technology and Intel®Trusted Execution Technology (Intel®TXT)
STORAGE	Up to eight (8) slots for FIPS SSD/SAS removable drives Optional: 256GB and more NVMe storage via M.2 slot RAID: Broadcom MegaRaid 9560-16i	POWER	100-250VACwide-range, 800W or 1,000W dual-redundant power supply, US Standard EIA Plug
BASE BOARD MANAGEMENT CONTROLLER	ASPEED AST2600 BMC supports IPMI v1.5/2.0 One (1) dedicated IPMI LAN port (rear) VGA Graphics controller via AST2600 BMC	MECHANICAL	Outer Chassis: Machined aluminum alloy overlapping panel extrusions for superior EMC and zero torsional flex Dimensions: 1U x 19" W and depths in options of 22" or 24" Weight: Payload dependent
ETHERNET LAN	Optional: Four (4) 10/100/1000 BaseT ports Optional: Dual 10GbE BaseT ports	ENVIRONMENTAL	Operating Temp: 0 to +40°C Storage Temp: -40 to +70°C Humidity: Up to 95% Non-Condensing Vibration: MIL-STD-167 & random vibration per MIL-STD-810 Shock: Operating while exposed to 20g shocks per MIL-STD-810 EMI/EMC: Tested per MIL-STD-461
EXPANSION SLOTS	Up to six (6) x16 PCIe 4.0 slots Eight (8) PCIe 4.0 NVMe internal ports M.2 interface via two (2) x1 PCIe 2.0 M.2 M-key		
USB	Up to five (5) USB 3.0 ports		

ORDERING INFORMATION

