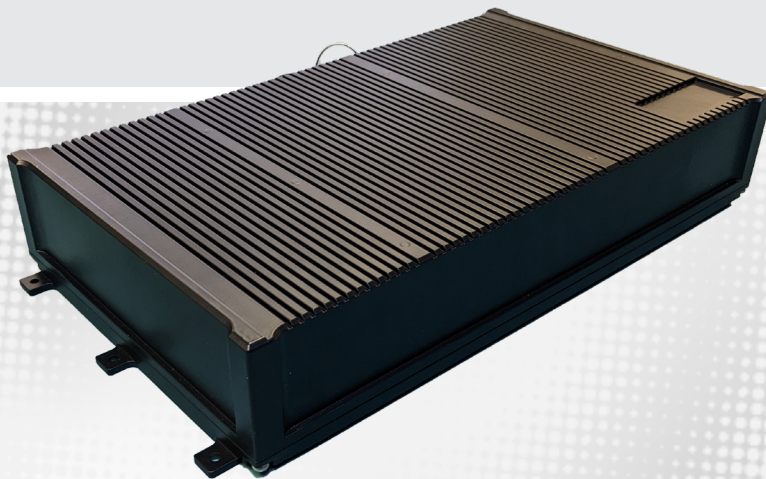


TRAX-25



PRODUCT HIGHLIGHTS

- ✓ Multiple Intel[®] processor options including i3, i7 and Xeon scalable processor up to 6 cores
- ✓ Highly configurable platform with graphics and avionic interface options
- ✓ Removable storage with write protection
- ✓ Options for 2MB NVRAM and more
- ✓ MIL-STD-461 / 704 / 1275 power supply with 50ms hold-up and beyond



FEATURES

OPERATING SYSTEM	Windows, Linux
PROCESSOR	Multiple Intel® processor options including i3, i7, and XEON® with up to 6 cores @ 4.2GHz
MEMORY	Up to 64GB DDR4 with ECC option Optional 2MB and above NVRAM
GRAPHICS	Integrated Intel HD Graphics 630 / P630 Optional MXM/XMC graphic cards Support for Direct X12, OpenGL 4.6, Open CL 2.6, Vulkan 1.1.103
VIDEO DECODE	H.262, H.264, H.265, JPEG/MJPEG, VC-1, VP8, VP9 hardware acceleration
STORAGE	Multiple storage slot options: Two (2) SATA 6Gb/s slots Two (2) mSATA 6Gb/s slots M.2 (B & M Keys) SATA 6Gb/s slots
SERIAL	Up to four (4) RS232/RS422/RS485 isolated ports with integrated Watchdog hardware
USB	Up to eight (8) USB 2.0/3.1 ports with allowed current of up to 900mA per port
ETHERNET	One (1) 1GbE ethernet port Optional two (2) to right (8) additional 1GbE ethernet controller
EXPANSION	Two (2) mPCIe sites on SBC Two (2) M.2 sites on SBC XMC, MXM, and/or mPCIe via mezzanine
POWER REQUIREMENT	Power button: water resistant with LED backlight Power-In: 10VDC – 36VDC MIL-STD-1275, MIL-STD 461 with hold-up and RP, OV, and surge protection
MECHANICAL	Dimension: 2.9" x 16.7" x 9.7 (H x W x D) Weight: <20lbs (payload dependent) Fan-less operation
OPTIONAL AVIONIC INTERFACES	Two (2) dual-redundant MIL-STD-1553 connections on mini-PCIe card Two (2) ARINC-429 Rx connections on mini-PCIe card
SECURITY	Password encrypted BIOS TPM 2.0
CONNECTORS	MIL-SPEC circular connectors
ENVIRONMENTAL	MIL-STD-810 & DO-160 Temperature, altitude, shock & vibe tested MIL-STD-461 EMI/EMC tested

ORDERING INFORMATION

